

THE LANGLEY

a superb 4 bedroomed home

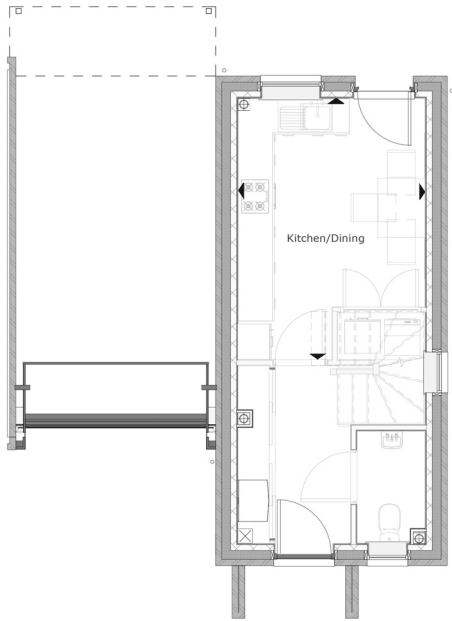


The Langley is a stunning four-bedroom town house. It includes parking provision with an integral undercroft, hallway with ground floor WC and open plan kitchen/dining with access to the rear garden.

The first floor consists of a family bathroom, a bedroom, and a living room with a balcony overlooking the rear garden. The second floor has the master bedroom with ensuite, 2 further bedrooms and a family bathroom.

THE LANGLEY

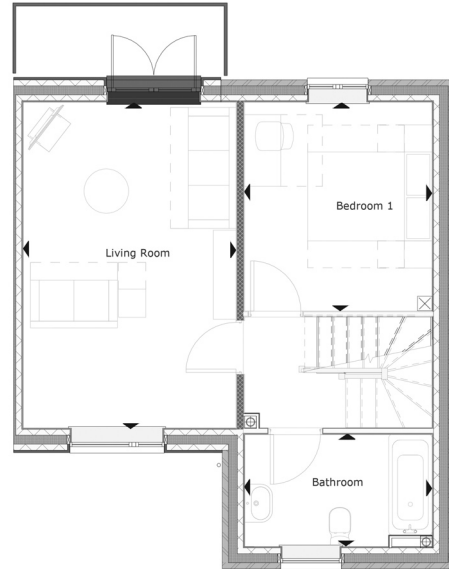
4 BEDROOM HOUSE



Ground Floor

Room dimensions

Kitchen/Dining 3.15m x 4.36m
10'4" x 14'3"

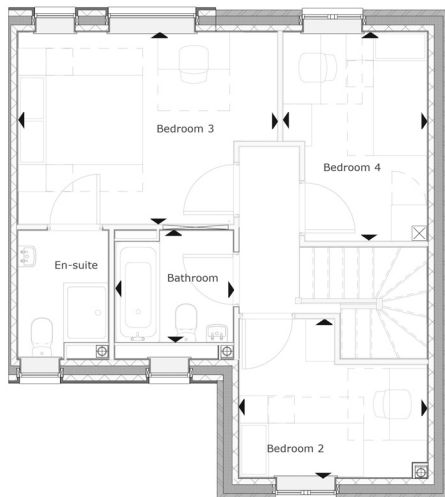


First Floor

Room dimensions

Living* 3.62m x 3.18m
11'10" x 10'5"

Bedroom 2 3.20m x 3.53m
10'5" x 11'7"



Second Floor

Room dimensions

Bedroom 1 4.35m x 3.23m
14'3" x 10'7"

Bedroom 3 3.15m x 2.66m
10'4" x 8'8"

Bedroom 4 2.42m x 3.51m
7'11" x 11'6"

Specifications: This information is for guidance only and does not form any part of a contract or constitute a warranty.

Illustrations are of typical elevations and may vary. Floor plan are not drawn to scale.

Room dimensions are subject to a +/- 50mm(2") tolerance and are based on a maximum dimensions in a each room.

*Please consult your sales advisor on site for specific elevations, room dimensions and external finishes. *TBC*